

MORGAN OFFSHORE WIND PROJECT: GENERATION ASSETS

Annex 3.6 to the Applicant's response to Relevant Representations from Natural England (RR-026.E.7)

Deadline: Procedural Deadline

Application Reference: EN010136

Document Number: MRCNS-J3303-RPS-10129

Document Reference: S_PD_3.6

27 August 2024

F01



MORGAN OFFSHORE WIND PROJECT: GENERATION ASSETS

Document status

Version	Purpose of document	Authored by	Reviewed by	Approved by	Review date
F01	Procedural deadline	RPS and Seiche	Morgan Offshore Wind Limited	Morgan Offshore Wind Limited	August 2024

Prepared by:

RPS

Prepared for:

Morgan Offshore Wind Limited

Contents

1	APPLICANT’S RESPONSE TO RELEVANT REPRESENTATION FROM NATURAL ENGLAND	1
	(RR-026.E.7)	1
1.1	Introduction	1
1.2	Response.....	1

Figures

Figure 1:	Modelled TTS ranges for fish with European sites designated for Annex II diadromous fish (single piling, 4,400 kJ hammer energy, north piling location)	2
Figure 2:	Modelled TTS ranges for fish with European sites designated for Annex II diadromous fish (single piling, 4,400 kJ hammer energy, west piling location).....	3

Glossary

Term	Meaning
Applicant	Morgan Offshore Wind Limited

Acronyms

Acronym	Description
HRA	Habitats Regulations Assessment
SAC	Special Areas of Conservation
SEL	Sound Exposure Level
SELcum	Cumulative Sound Exposure Level
SELss	Single Strike Sound Exposure Level
TTS	Temporary Threshold Shift

Units

Unit	Description
dB	Decibel
kJ	Kilojoule
m	Metre
μPa	Micropascal

1 Applicant's response to Relevant Representation from Natural England: Fish and Shellfish (RR-026.E.7)

1.1 Introduction

1.1.1.1 This document has been prepared in response to comment RR-026.E.7 provided in Table 2 of Appendix E of Natural England's Relevant Representation addressed to the Applicant.

1.1.1.2 The comment and recommendation is as follows:

Comment:

1.1.1.3 *Further to the above comment, whilst it is useful to display TTS range (23,900m) for fish in a tabular format, it would be more useful to have a site contour map displaying the array red line boundary, designated sites and this range to allow Natural England to visually assess proximity to protected sites more easily.*

Recommendation:

1.1.1.4 *Provide a contour map for TTS range.*

1.2 Response

1.2.1.1 Contour maps for the modelled Temporary Threshold Shift (TTS) range of 23,900 m are provided for the north and west piling locations in Figure 1 and Figure 2, based upon a TTS threshold of 186 dB re 1 $\mu\text{Pa}^2\text{s}$ (cumulative Sound Exposure Level; SEL_{cum}).

1.2.1.2 Figure 1 and Figure 2 show the relevant designated sites for Annex II fish based upon those sites considered within the Habitats Regulations Assessment (HRA) Stage 1 Screening Report (APP-099) and the HRA Stage 2 Information to support an appropriate assessment Parts 1, 2 and 3 (APP-096 to APP-098).

1.2.1.3 There is no overlap with the designated sites assessed under the HRA for Annex II fish by the TTS contour at either modelling location.

MORGAN OFFSHORE WIND PROJECT: GENERATION ASSETS

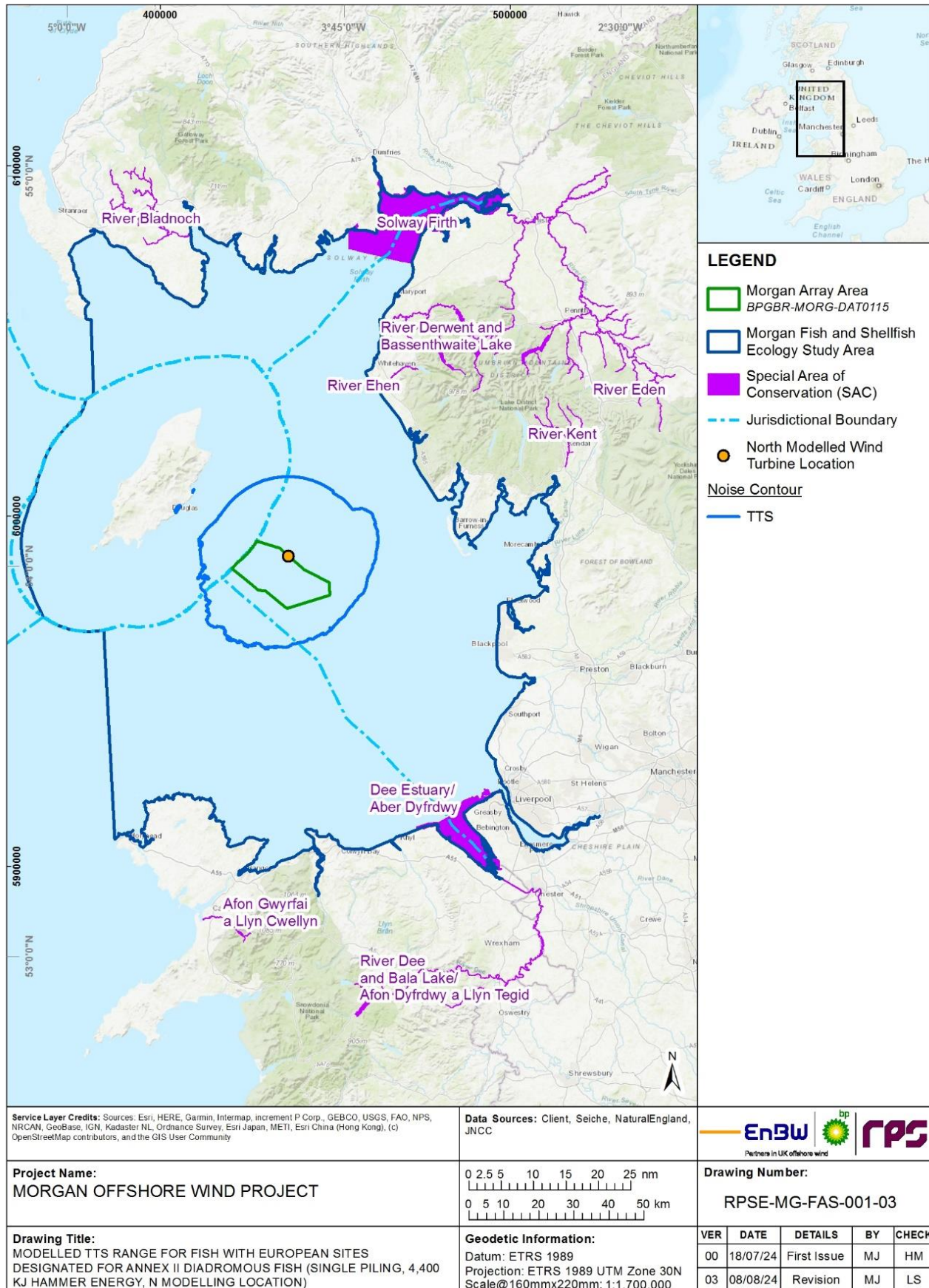


Figure 1: Modelled TTS ranges for fish with European sites designated for Annex II diadromous fish (single piling, 4,400 kJ hammer energy, north piling location).

MORGAN OFFSHORE WIND PROJECT: GENERATION ASSETS

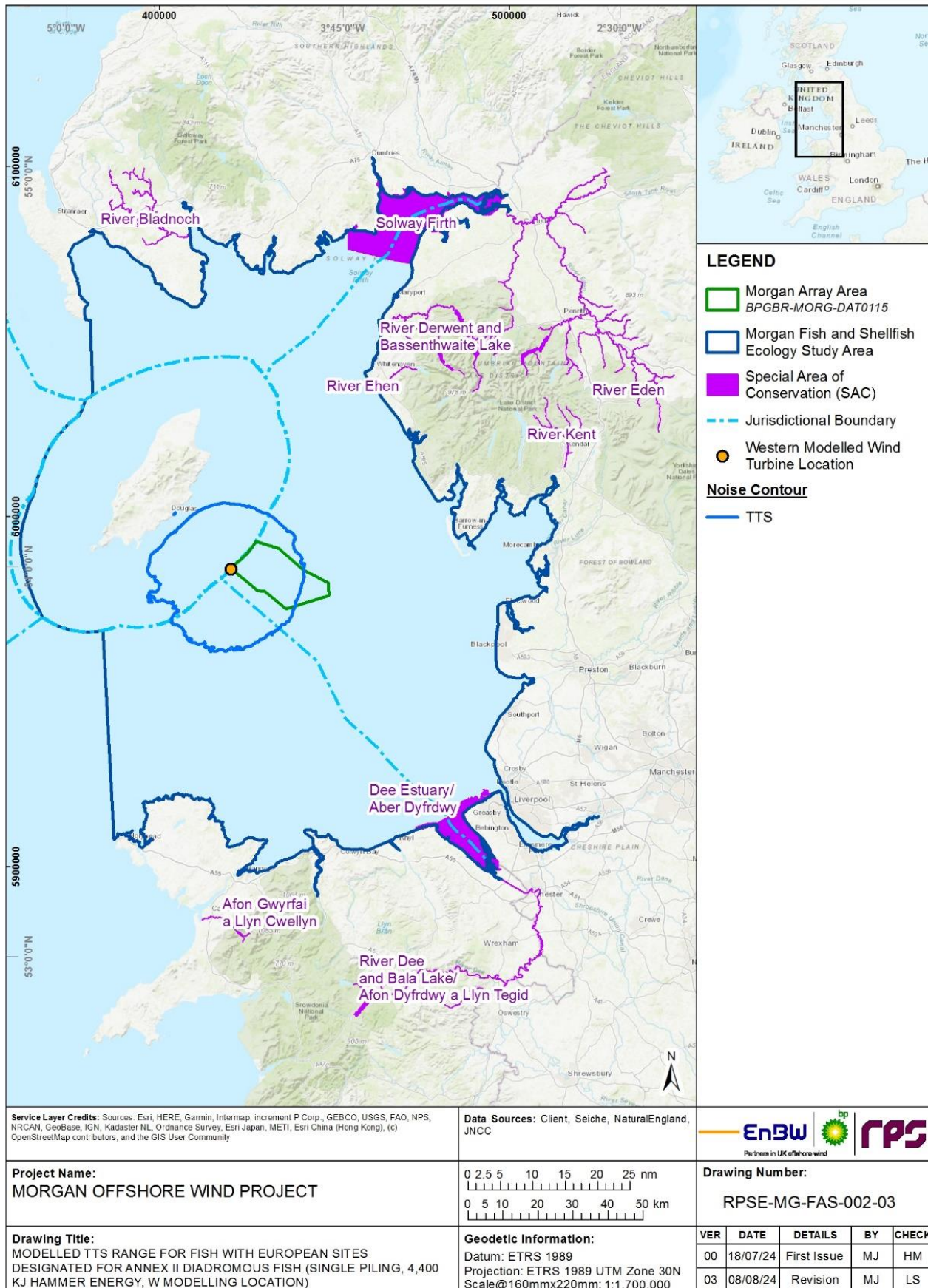


Figure 2: Modelled TTS ranges for fish with European sites designated for Annex II diadromous fish (single piling, 4,400 kJ hammer energy, west piling location).